



D11C08A

Sardinian nature has provided a permanent source of inspiration and remains the hallmark of Gallura's rug collection. The Iris rug is inspired by the local flora of Sardinia. This design is a symbolism of natural forms, specifically the Iris flower that is commonly found around the island. Its distinctive folded petals inspired the delicate silk thread that is meticulously crafted to create a very unique texture. A closer look reveals a refined depth of color resulting from the contrast between the crisp texture of the silk thread and the silk/viscose base.

#### Product specifications:

Weft material: 85% Silk, 15% Viscose, Cotton borders

Warp material: Cotton

Size: Maximum width 548 cm (18')

Thickness: Approx. 8 mm (5/16")

Production: Handmade in Italy

#### Care and maintenance:

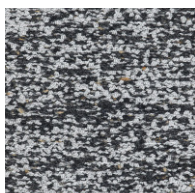
Suggested use: Bedroom, Living Room, High-traffic areas

Cleaning: Professional dry cleaning only

#### Color options:



C01A



C02A



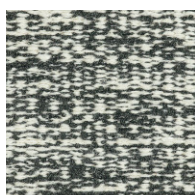
C03A



C03B



C04B



C05A



C06A



C08A



C09A