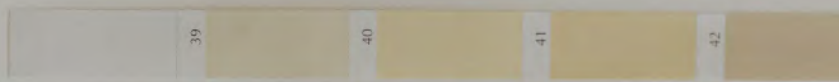




# WOVEN LANDSCAPES

The Woven Landscapes collection represents the culmination of a long and passionate journey that begins with a careful observation of nature. Through a detail-oriented approach, a world of forms and nuances is revealed, which Gallura places at the center of a creative process where these natural elements are translated into captivating textile parameters. Each piece in the Woven Landscapes collection tells a story—a story deeply connected to the colors, expressions, and textures found in nature, particularly reflecting the evocative and diverse landscape of Sardinia. With the Woven Landscapes collection, composed of 18 designs available in numerous color variations (for a total of 120 creations), Gallura introduces itself to the market as a designer and maker of high-quality textile creations where strong innovation and artisanal tradition seamlessly converge.





Front



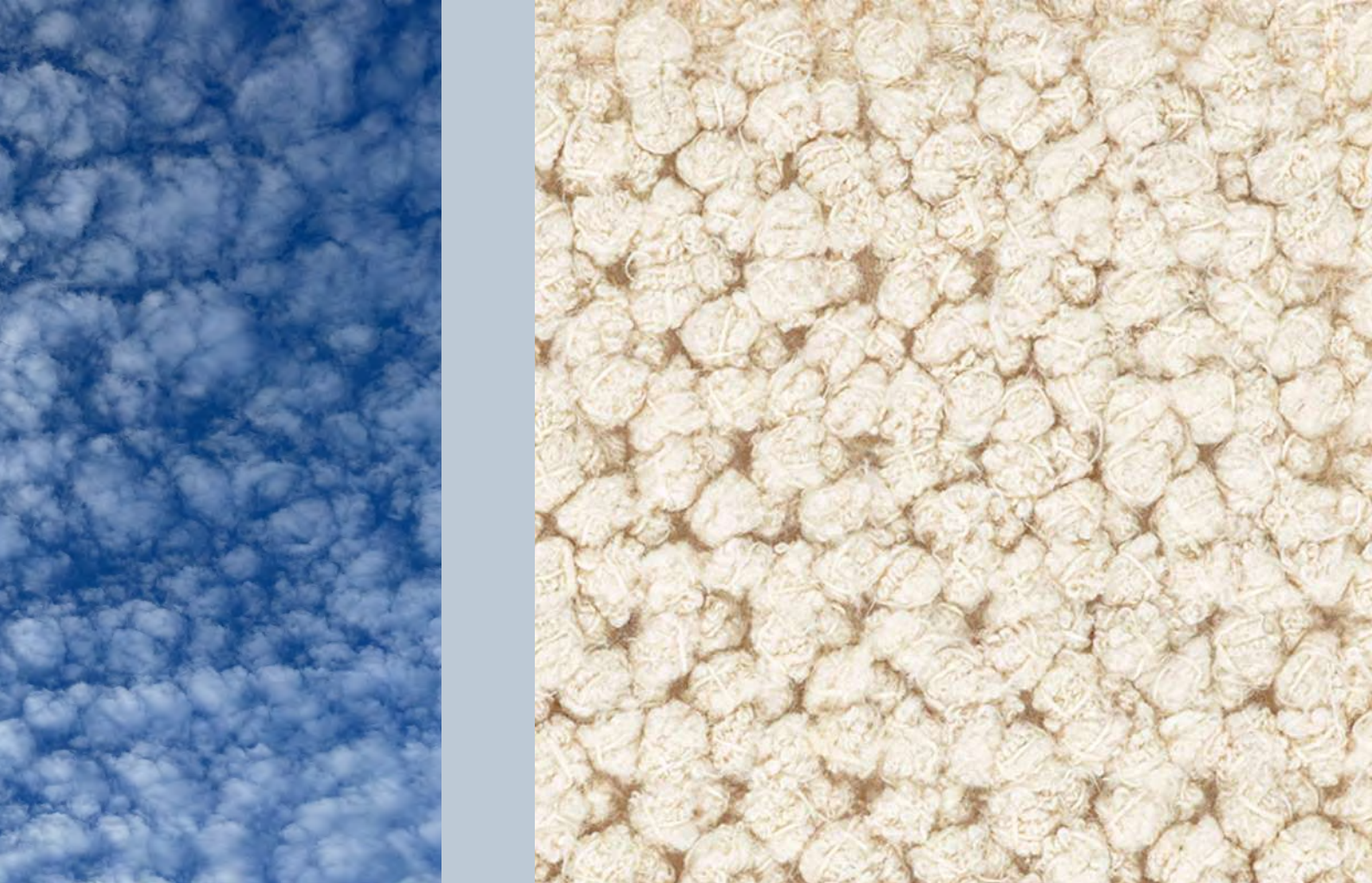
Vina Vina











## 1. NUI

The Nui rug is woven using the "a Pibiones" weaving techniques where the loops that create the rug's surface are formed by twisting the yarn around a needle. In this design, a fine blend of Mulberry silk yarns has been selected to achieve contrasting colors and sheen, giving the rug a refined appearance. Nui is a Sardinian word and means "pile of clouds." It is available in five color variations with shades of gray, blue, white, and sand. Nui is entirely handmade and finished with cotton edges that highlight a subtle herringbone pattern with a very discreet detailing.







## 2. CARDU

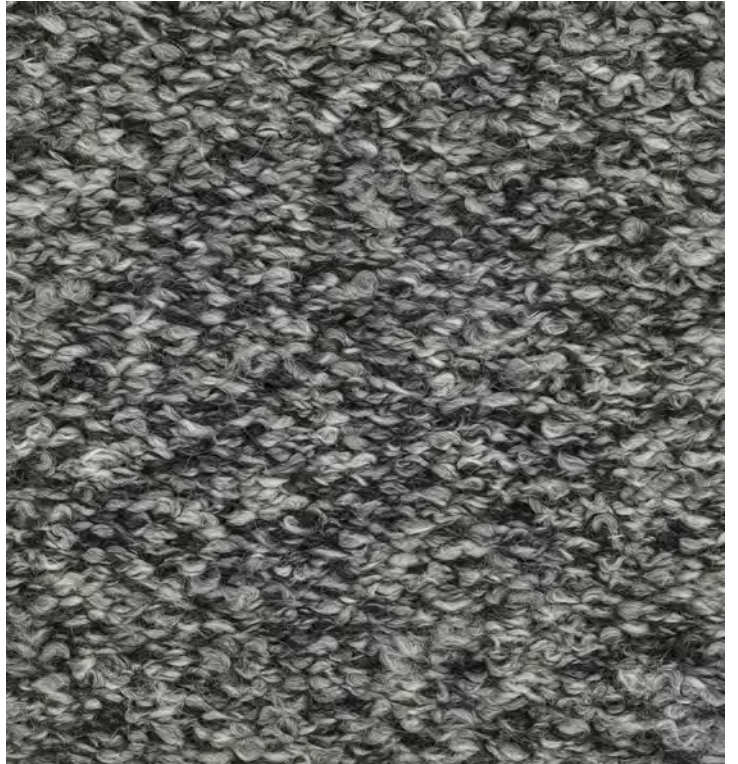
Cardu is the Sardinian name for wild thistle which is widespread throughout the island. Dried thistle has a long history of use in the textile world for finishing and providing the ultimate touch of softness to fabrics especially those made out of precious fibers such as Cashmere and Merino wool. In addition to its role in the carding process, the thistle plant blooms with a distinct and delicate purple flower. The Cardu rug, woven from a blend of fine wools, features a soft-to-the-touch surface with a uniform base from which irregular elements emerge, creating a texture that mimics the appearance of thistle flowers. This rug is available in seven color variations and aims to capture the essence of wild thistle plants and their flowers swaying in the wind.





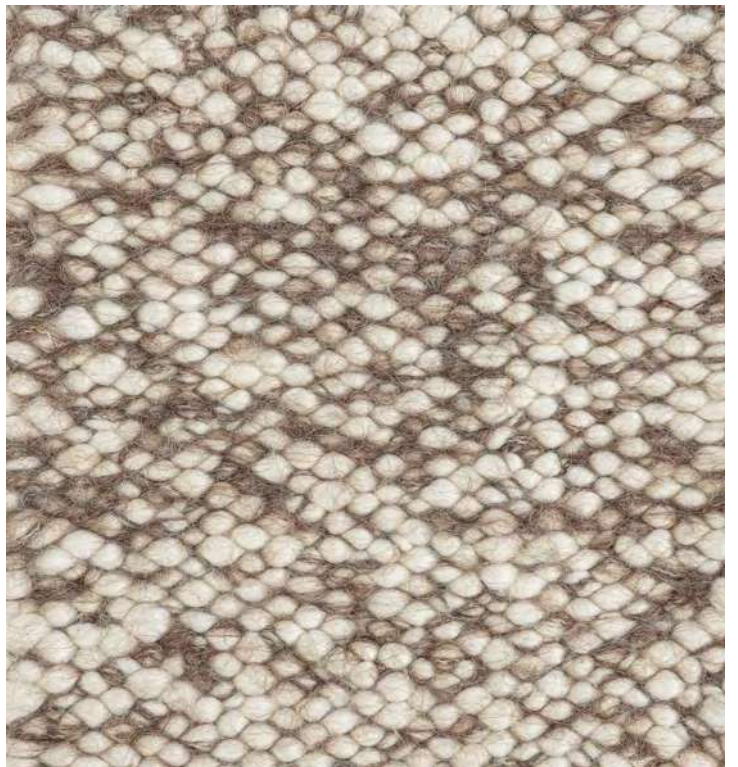
### 3. TERRA

The Terra rug is crafted using the ancient "Stuoia" weaving technique. The yarn is composed of a blend of wools including Alpaca from the Andes, Perù, giving it an exceptionally soft feel. The undulating appearance and bouclé effect of its texture is due to the construction of the yarn itself, which is a defining feature of this rug. The available color variations are characterized by neutral earthy tones, making Terra a versatile decorative piece suitable for any environment.



### 4. NEVE

Neve is a rug distinguished by its exceptional softness and distinctive contrasts resulting from the combination of yarns with different colors and textures. Woven from fine wools, alpaca, and silk, the Neve rug is the outcome of a careful and meticulous research in creating a unique yarn, specifically designed to produce an irregular grid across its surface. Due to the composition of the yarn as well as the delicate color and soft texture, this design is best suited for areas with lower foot traffic, such as the bedroom. Neve is available in four color variations where color contrasts have different degrees of intensity.





## 5. RUBIA

The Rubia rug is named after a floral species widely found in Sardinia and traditionally used as a dye plant, with its roots producing shades of red. With its delicate flowers, Rubia enhances the Mediterranean landscape, painting beautiful color gradients as far as the eye can see. The Rubia rug invites to explore the multitude of colors, textures, and intricate details that embellish its surface, much like the small Rubia flowers enrich the meadows, coasts, and valleys across the island of Sardinia. Crafted from a fine blend of Tussah silk, the Rubia rug is available in eleven color variations.



## 6. LUCE

The Luce rug is born from the intertwining of very different materials such as alpaca and silk, creating unique contrasts in both luminosity and texture, adding shadows and a sophisticated movement to its surface. Depending on the intensity of the light, the silk portion is highlighted by a multitude of color shades, accentuated by the irregular alternating of the alpaca threads. Available in nine monochromatic variations, Luce will elegantly complement any interior.





## 7. SANENU

In Sardinian, "Sanenu" means dew. This design and its sophisticated texture are inspired by the small, delicate, and irregular droplets of water that form on grass blades in the early hours of the morning. Carefully crafted on manual looms, this rug is woven with natural Mulberry silk and Merino wool yarns, giving it a unique three-dimensional texture. Sanenu is available in five color variations in shades of gray and brown.



## 8. PRATO

The Prato rug is the ultimate synthesis of research into noble fibers and craftsmanship applied to the creation of innovative yarns. Woven with a blend of fine wools (Merino and Alpaca) and adorned with linen and silk embroideries, Prato (the Italian word for field Prato) celebrates nature's harmonious tapestry and invites to explore the multitude of shapes and colors that create mesmerizing patterns making each rug unique and unrepeatable. The color combinations have been carefully selected to create harmonious and elegant pairings that complement the shades of other Gallura designs.





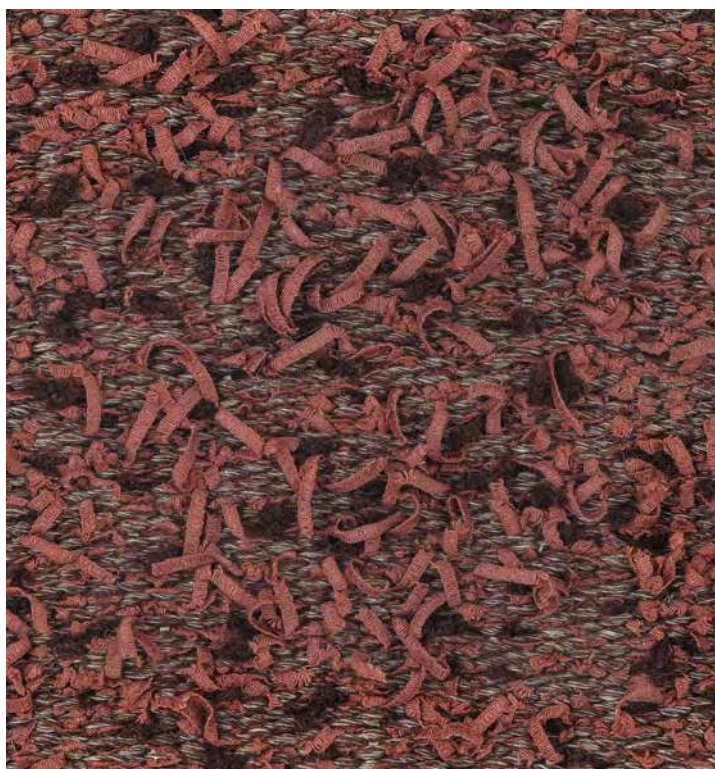
## 9. ALISSO

The Alisso rug is inspired by the Alisso flower, an endemic species of the island of Sardinia. Handwoven on traditional four-shaft looms using a traditional Sardinian weaving technique, Alisso combines Italian wool with alpaca wool to create a pattern with a subtle and elegant movement. Available in eight color variations, it is a versatile rug suitable for any interior.



## 10. BENTU

In Sardinian, "Bentu" means wind. The Bentu rug is a tribute to the vital role of the wind in shaping landscapes by scattering plant and flower seeds and creating ever-changing, diverse sceneries rich in forms and colors. Sardinia is an island swept by eight different winds, and the beauty of its landscapes is owed largely to the wind's influence. Crafted from linen and alpaca wool, the Bentu rug features a homogeneous mélange base from which linen and alpaca threads emerge unevenly creating an intricate and irregular texture that represents the complexity and variety found in nature. The Bentu rug is the ultimate representation of the concept of "Woven Landscapes."





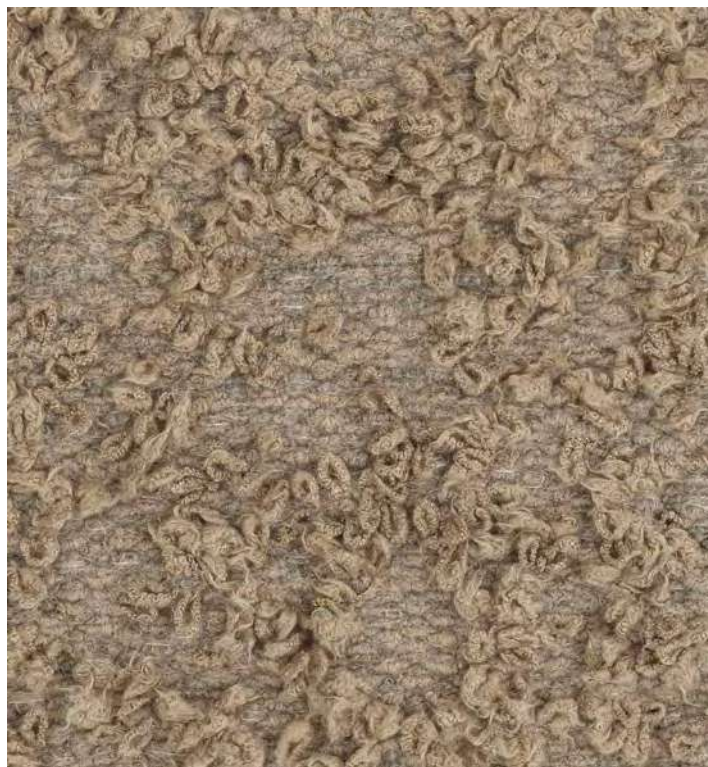
## 11. IRIS

The Iris rug is a tribute to the countless expressions of color and irregular shades observed in the Iris flower, whose petals feature jagged edges and vibrant color contrasts. When closely examining its nine available color variations, the Iris rug reveals the deep and meticulous attention Gallura pays to the combination of materials and colors to recreate sophisticated and original shades. In nature, the Iris flower also appears in numerous varieties (over two hundred). Besides symbolizing the arrival of spring, this flower is characterized by a simple elegance that, upon closer inspection, reveals unexpected details.



## 12. FOLIA

Each Gallura creation is inspired by images, elements, and manifestations of nature. The Folia rug (Latin word for leaves) pays homage to and seeks to represent the evocative image of a blanket of leaves. Beyond recreating the delicate beauty of this natural expression, it also symbolically celebrates the cycle of transformation that underpins life and everything that occurs in nature. The surface of the Folia rug, handwoven from a blend of fine silks, linen, and alpaca wool, is distinguished by its extraordinary softness and unique texture, achieved through masterful and fully artisanal yarn processing techniques.





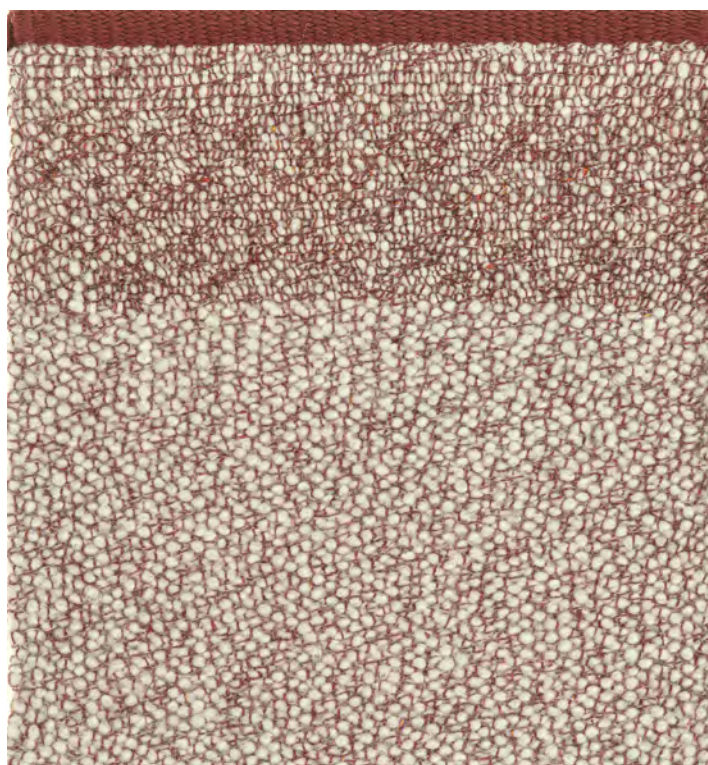
## 13. ALBA

The Alba rug is born from the encounter of two complementary yet distinct materials, creating a design that emphasizes contrast. Half of the rug is woven with alpaca using a specially crafted bouclé yarn to accentuate texture and creating a soft and voluminous surface. The other half is woven with a custom-made wool yarn providing a more homogeneous surface. The result is an unexpected, elegant and sophisticated contrast. Available in three color variations, the Alba rug captures the essence of dawn, when the horizon line highlights the division between sky and earth.



## 14. PURA

The starting point with Gallura's Pura rug was the choice of using the most noble of fine fibers: cashmere. The soft touch of brushed cashmere intertwines with the finest silk, forming an intricate pattern with two distinct levels of saturation. One-third of the rug blooms in richer colors, while the remaining part showcases a more delicate tone. The Pura rug unveils a wide selection of subtle hues, an ode to understated elegance. Pura is available in nine color variations, offering a diverse and refined palette suited for contemporary spaces and beyond.





## 15. ERBE

Erbe is the Italian name for grass. Inspired by the slender silhouette of wild grasses, the Erbe rug is the abstraction of a field. Woven from a blend of different alpaca wools where contrasting color yarns are mixed, the Erbe rug is the ultimate translation of textures as seen in nature into textiles and it weaves a soft and incredibly pleasant surface to the touch. Presented in a wide and refined color palette where each color variation features a predominant tone complemented by sophisticated nuances, Erbe is a highly versatile rug and an elegant addition to Gallura's collection.



## 16. JASPE

As suggested by its name, Jaspe offers a surface distinguished by variegated colors and shades enhanced by the combination of different materials: wool, silk, and linen. The color tones have been carefully selected to create seven color variants with well-defined yet extremely complementary contrasts, achieving discreet detailing and refined elegance. Crafted by hand on traditional looms using the ancient "Stuoia" weaving technique, Jaspe is also further embellished and finished with a cotton border that adds a distinctive touch and personality to this versatile rug, suitable for contemporary design spaces and beyond.





## 17. ARIA

Aria is the Italian name for air. Gallura's Aria rug is handwoven using the traditional Sardinian weaving technique known as "a Pibiones" and is distinguished by unparalleled softness. It is meticulously crafted with the most precious fibers of wool, silk and alpaca that are expertly combined into unique and original yarns. These threads, together with the weaving technique employed, enhance a voluminous texture providing the ultimate softness. Aria is presented in a palette of inviting, warm, delicate color nuances and is adorned with a finely crafted cotton border that matches the rug's hues. As its name suggests, the Aria rug embodies lightness, bringing a sense of tranquility, calm, and comfort to any space.



## 18. FIORE

The Fiore rug is inspired by a floral species called Vira-Vira (Gnaphalium), widely found in the coastal areas of Chile. The Vira-Vira is characterized by clusters of white, round flowers and it is also known as "hierba de vida" or "herb of life." Thanks to Gallura's knowledge and experience in fiber processing and the creation of unique yarns, the Vira-Vira flower was skillfully recreated using a blend of the finest wools, silk, and linen. Entirely handcrafted and embellished with spiral borders, the Fiore rug features a sophisticated texture of rare beauty also offering unparalleled softness. Fiore is available in seven color variants that favor natural tones as well as two more vibrant hues.









## CREATIVE DIRECTION

Ignacia Murtagh

## PHOTOGRAPHY

Walter Zerla

Federico Manneschi

## STYLING

Davide Casali



GALLURA.COM  
INFO@GALLURA.COM

Gallura rugs are handmade in Sardinia, Italy, with the finest natural fibers according to ancient weaving techniques. Small imperfections and irregularities are not to be seen as defects but rather as part of the charm of a handcrafted product and the result of the artisanal production process.

The products may vary slightly in color, size and finish from those in our specifications and samples. Gallura safeguards industrial and intellectual property rights, including copyrights, patents, trademarks and recognition marks, following the policies and procedures provided for their protection and also respecting the intellectual property of others.