



D12C02A

Landscapes are part of the continuous cycle of creation, blossoming and passing, and throughout the seasons, a variety of colors, shapes and textures can be observed. Often overlooked, decay can also provide endless forms of beauty. With Fall comes the beautiful image of leaves quietly falling and gracefully laying down on the terrain. The Folia rug is the celebration of this final phase of life and its ultimate expression of beauty. This unique textured rug, handwoven with a blend of the finest silk, linen and alpaca wool, finds its inspiration from the falling leaves in autumn. Folia is the Latin name for leaves.

Product specifications:

Weft material: 70% Silk, 15% Linen, 15% Alpaca

Warp material: Cotton

Size: Maximum width 548 cm (18')

Thickness: Approx. 8 mm (5/16")

Production: Handmade in Italy

Care and maintenance:

Suggested use: Bedroom, Living room, High-traffic areas

Cleaning: Professional cleaning only

Color options:



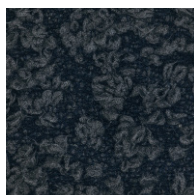
C01A



C02A



C03A



C04A