



UTILITY SIDE CHAIR

By Jasper Morrison, 2022

Utility is a collection of true longevity that combines purposeful, utilitarian design with solid materials and craftsmanship. The handcrafted frame in recycled aluminum is combined with a seat and back in solid, sustainably sourced, local wood. Choose from Ash, Oak, Walnut and outdoor approved Accoya.

Features:



Outdoor approved (seat & back in accoya)



Made from 80% recycled aluminum

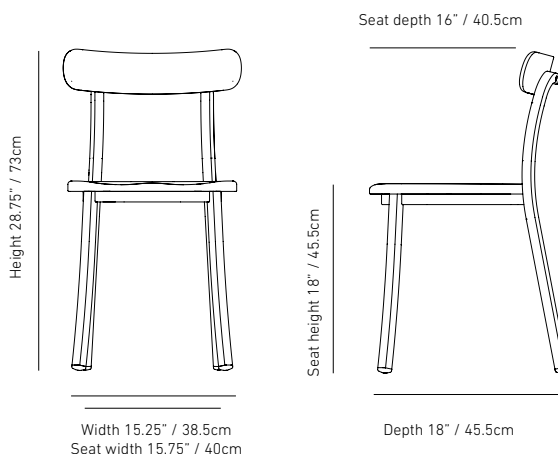


Carbon footprint declared



Made in USA

Dimensions:



Weight: 9.3lb / 4kg

Material: 80% recycled aluminum.

Standard glides: Plastic TPU, for all floor surfaces, including outdoor.

Finishes:

FRAME:



Hand brushed
ALUMINUM



Black powder coated
ALUMINUM

OPTIONAL FRAME IN EMECO'S INHOUSE POWDER COAT COLORS:



Dark Grey
NCS S 7002-B



Coral Orange
NCS S 2570-Y70R



Green
NCS S 7020-G10Y



White Grey
NCS S 1502-Y



Light Blue
NCS S 5010-B70G



Sweater Brown
NCS S 5010-Y30R

SOLID WOOD SEAT & BACK:



Ash



Dark stained ash



Walnut



White oak



Accoya



UTILITY SIDE CHAIR

By Jasper Morrison, 2022

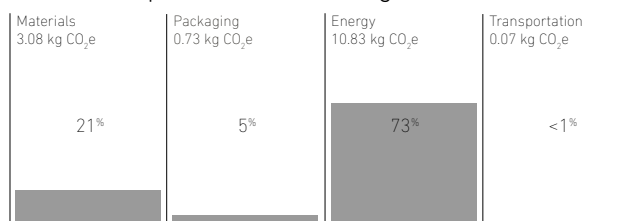
Warranty:

Indoor: 7 years, excl. glides
Outdoor: 2 years, excl. glides
(accoya seat & back only)

Certified:

Strength & Stability: ANSI/BIFMA x5.1
Flammability: Aluminum is naturally fireproof
Indoor Air / VOC: ANSI/BIFMA e3-2019,
Sections 7.6.1, 7.6.2, 7.6.3

Carbon Footprint: from 14.7kg CO₂e



Verified carbon footprint for Utility side chair, with brushed aluminum frame and ash seat & back, using the 2030 Calculator.

Circular Content / Materials:

Frame:



- Recycled aluminum, 80 %
(50% post-consumer, 50% post-industrial)
- Virgin aluminum 20%

End of Life / Recyclability:

The Utility aluminum frame is 100% recyclable by Emeco into a new chair of the same or similar model.



Ingredient Disclosure:

Health Product Declaration (HPD) disclosed to 1000 ppm.

Potential LEED and WELL contributions:

Emeco products contribute to a number of LEED Credits:

LEED BD + C (Building Design and Construction) and ID+C (Interior Design and Construction):

- ✓ CREDIT CATEGORY: MATERIALS AND RESOURCES
 - Sourcing of Raw Materials
 - Material Ingredients
 - Furniture and Medical Furnishings
(only applies to LEED BD+C: Healthcare)
 - Construction and Demolition Waste Management
- ✓ CREDIT CATEGORY: INDOOR ENVIRONMENTAL QUALITY
 - Low-Emitting Materials

Emeco products contribute to WELL v2 certification for the following features:

- ✓ Concept Materials: Feature X07 Material Transparency (Part 1, 2, 3)
- ✓ Concept Materials: Feature: X07 Material Optimization (Part 1)
- ✓ Concept Innovation: Feature: I06 Carbon Disclosure and Reduction (Part 1)
- ✓ Emeco products may also contribute to WELL Concepts Air, Light and Thermal Comfort.

Downloads & More Information:

[Download Certificates and HPD](#)

[Download LEED & WELL information](#)

[More Carbon Footprint information](#)



UTILITY SIDE CHAIR

By Jasper Morrison, 2022

Requires Assembly:

No. Delivered fully assembled.

Shipping Dimensions:

1 item per box (WxHxD, weight): 22x20x33, 11-14lb*

2 items per box (WxHxD, weight): 26x18x40, 15-21lb*

*depending on seat type/wood

Packaging materials:

Outer Packaging: Recycled cardboard.

Inner Packaging: Recycled cardboard, recycled plastic and PE foam.

The packaging material is 100% recyclable.

Country of origin:

USA (stated on packaging)

Care & Maintenance:

Longevity is an important part of sustainability. All Emeco furniture is designed and built for a long life. To keep the Utility side chair looking good over time, follow our [care advice](#).

Replacement parts:

Utility side chair glides can be replaced to extend the product's lifecycle.

Manufacturing Facility Location:

Hanover, Pennsylvania

Other models, related collections & accessories:



[UTILITY
COUNTER STOOL](#)



[UTILITY BARSTOOL](#)