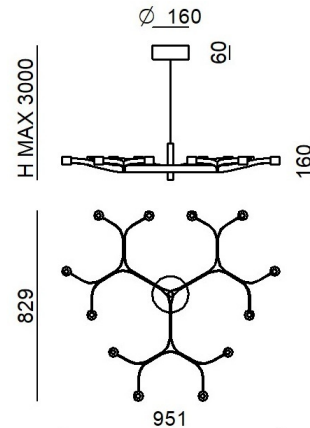


Pendant Luminaires | 200-240 V
 1 topLED 44 W DC - 51 W AC | CRI 90
CZ159CBBMDW



Technical data	
Designer	Pio and Tito Toso
Construction year	2026
Type	Pendant Luminaires
Installation position	Ceiling
Installation environment	Indoor
Light Source	LED
Circuit structure	topLED
Optics	Diffused + Wide Flood
Light emission direction	downward and upward
Nominal power	44 W DC
Total Power	51 W
Source lumens	6248 lm
Nominal input voltage	220 - 240 V AC
Input voltage range	200 - 240 V AC
Frequency	50 - 60 Hz
CCT / Tone	2700 K
Colour rendering index	90 Ra
C.C. / C.V.	AC
Safety class	1
IP	IP20
Glow wire test	850°
Direct mounting on normally flammable surfaces	Yes
CE	Yes
Driver included	Driver
Dimmable article	DALI-2 - PUSH DIM
Directional	No
Tilting	No
Walk-over	No
Drive-over	No
Cable included	Yes
Cable length	3 m
Resin potting	No
Type of light emission	Double emission
Electrostatic discharge protection	No
Surge protection	No

Finishing Finishing casing

Material	Aluminium
Colour	Text black (R9005)
Processing	Coating

Finishing Finishing diffuser

Material	PC
Processing	Satin finishing

Finishing Finishing mounting frame

Material	Iron
Colour	Text black (R9005)
Processing	Coating

Cables Electrification+suspension

Max cable length	3000 mm
------------------	---------

Pendant Luminaires | 200-240 V | 1 topLED 44 W DC - 51 W AC | CRI 90 | Base **CZ159CBBMDW**

Double emission pendant luminaires for indoor application. The super warm white LED light source with a diffused + wide flood light distribution is composed of 8 topLEDs with CCT of 2700 K and a CRI 90; the source luminous flux is 6248 lm, with a 142.0 lm/W nominal luminous efficacy.

The device body is made of aluminium and features a text black (r9005) finish, processed by means of coating; the diffuser is made of PC with a satin finishing treatment; the mounting frame is made of iron, with a text black (r9005) finish, processed by means of coating.

The ingress protection degree is IP20;

The total absorbed power is 51 W The power supply cable is included and features a 3 m length.

The device features protection class I and can be ceiling-mounted.

Compliant with the EN 60598-1 standard and its specific provisions.

Energy efficiency class

This product contains a light source of energy efficiency class E.

Illuminotechnical Features

Light Output Ratio (LOR)	50 %
Source lumens	6248 lm
Delivered lumens	3125 lm
Consumption	51 W
Luminaire efficacy	61 lm/W
Colour temperature	2700 K
Colour rendering index	90 Ra
Junction temperature (lighting fixture)	80
Standard Operating Ambient Temperature	25°C

LED Life / Failure Ratio

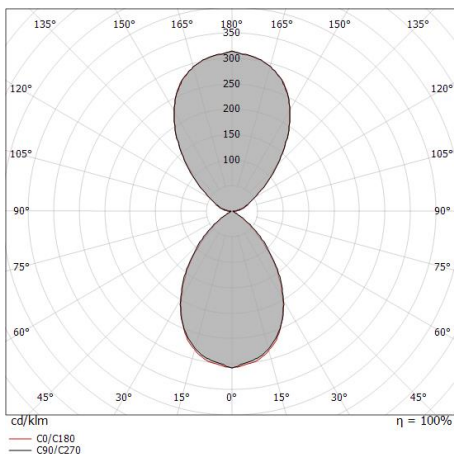
L70 B20 C0 72500h

UGR

UGR axial	0.9
UGR transversal	0.5
X=4H Y=8H	S=0.25H
Reflection factor	70/50/20

OPTICAL

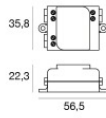
C0/C180 optics	72°
Light distribution symmetry	Symmetrical



Distance [m]	Cone diameter [m]	illuminance [lx]
0.5	0.74 0.73	E(0°) 3848 E(C90) 999 E(C0) 1021
1.0	1.49 1.45	E(0°) 962 E(C90) 250 E(C0) 255
1.5	2.23 2.18	E(0°) 428 E(C90) 111 E(C0) 113
2.0	2.97 2.91	E(0°) 240 E(C90) 62 E(C0) 64
2.5	3.71 3.63	E(0°) 154 E(C90) 40 E(C0) 41
3.0	4.46 4.36	E(0°) 107 E(C90) 28 E(C0) 28

— C0/C180 (Half-peak divergence: 72.0°)
— C90/C270 (Half-peak divergence: 73.2°)

Fronda | Pendant Luminaires | Accessories
CZ159CBBMDW



Dimmer - 0-10V, 1-10V or DALI dimming interface
Bluetooth, 220-240V

Code
KIT0079