



D02C02A

Cardu is the Sardinian name for wild thistles that are commonly seen on the island of Sardinia. The Cardu rug evokes the scenery of an open field with wild thistles blowing in the wind, creating beautiful yet unexpected patterns. While the rug base is woven with a mix of wools, the softest alpaca wool of the Suri quality creates the alluring yet irregular brushes that resemble thistle flowers.

Product specifications:

Weft material: 84% Wool, 16% Alpaca

Warp material: Cotton

Size: Maximum width 548 cm (18')

Thickness: Approx. 10 mm (3/8")

Production: Handmade in Italy

Care and maintenance:

Suggested use: Bedroom, Living room, High-traffic areas

Cleaning: Professional cleaning only

Color options:



C01A



C02A



C03A



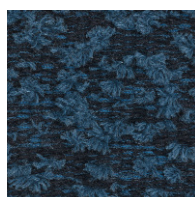
C04A



C05A



C06A



C07A